



Internal Medicine Residency Program Overview



Stephen J. Knohl, MD

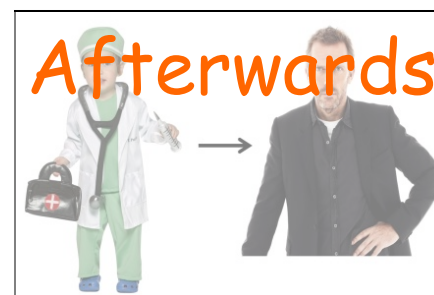
Program Director
Vice Chair for Education



State University of New York
Upstate Medical University



Agenda



Educational Programs Office (EPO)



Our Mission

- To train outstanding clinicians and scholars
 - Board Pass Rate of 97% Over The Last Ten (10) Years
 - Excellent Fellowship/Job Placement
- To provide a warm and cordial environment for training
 - Fully Accredited by ACGME (last visited in August '17)
 - Fully Compliant with NYS DOH Work Hours
- To Foster Strong, Life-Long Relationships Among Peers and Faculty
 - Mentoring Program
 - Social/Wellness Committee



Our Hospitals

Crouse Hospital



- 566 beds
- ICU/CCU
- ED with EMS opportunity
- Recently completed a \$50M expansion project

University Hospital



- 440 beds
- Serves over 17 counties
- New Cancer and Cardiovascular Centers
- Constructing new Ambulatory Center

VA Hospital



- 106 beds
- Serves over 13 counties
- Currently undergoing a \$77M expansion project



The Campus



Weiskotten and Setnor Halls



VA Medical Center



Institute for Human Performance



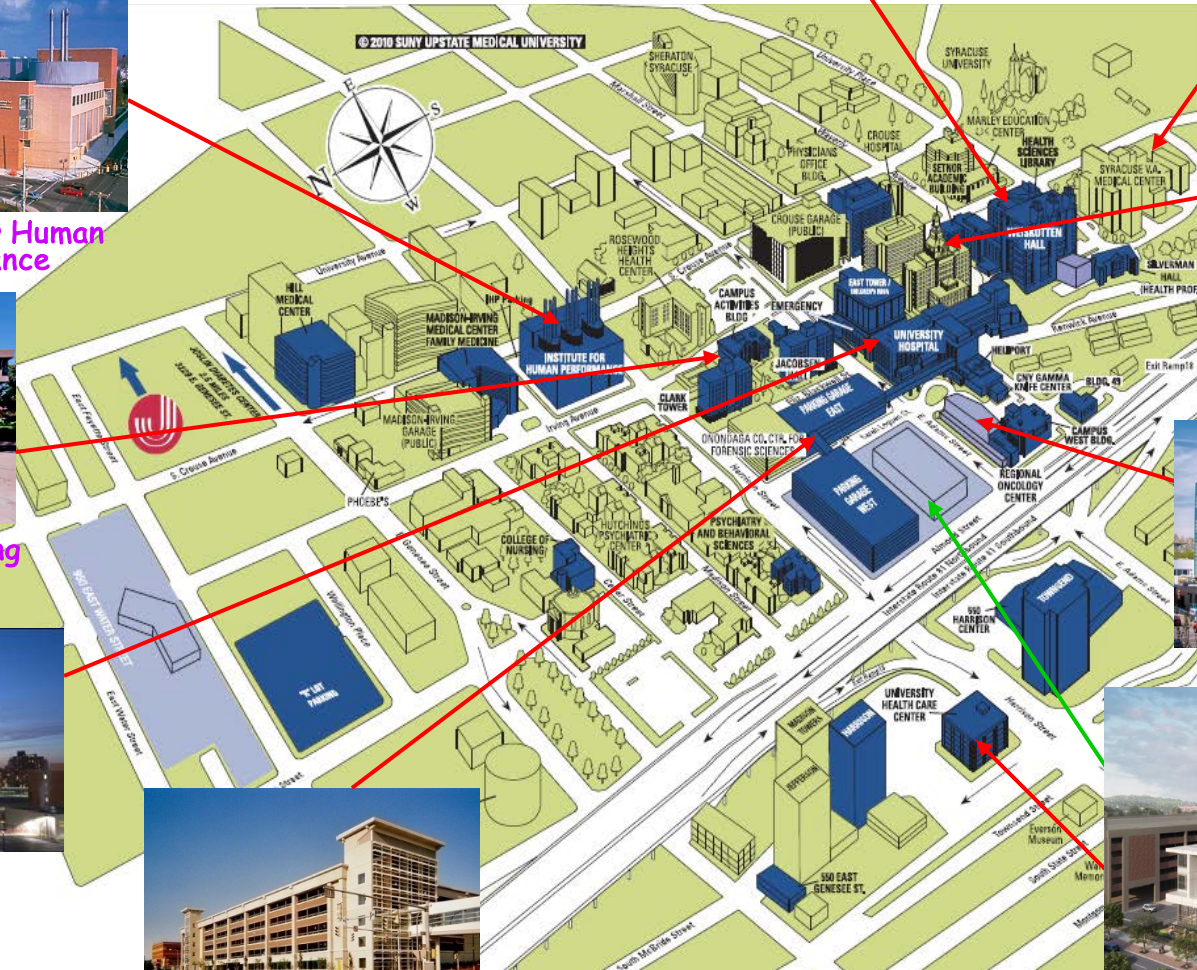
Campus Activities Building



University Hospital



Parking Garage



Crouse Hospital



Cancer Center



The City Of Syracuse

Onondaga
Lake

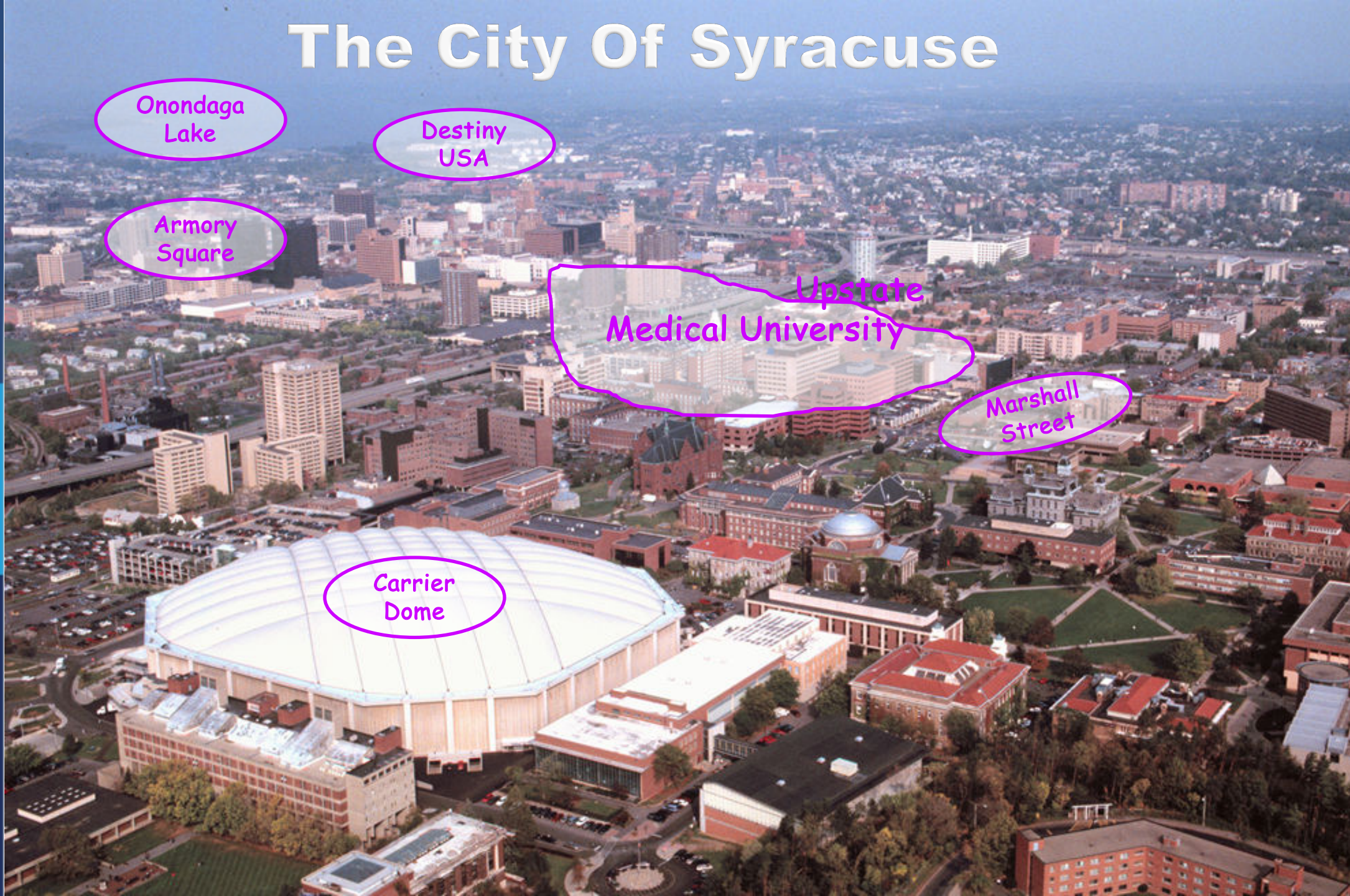
Destiny
USA

Armory
Square

Upstate
Medical University

Marshall
Street

Carrier
Dome



Residency



Residency

G U E S S
how
MANY?



- Number of Housestaff
 - PGY1s: 36 Cs + 23 Ps
 - PGY2s: 36 Cs
 - PGY3s: 36 Cs
 - Chief Residents (PGY-4s): 6
 - Fellows (PGY-4s through PGY-6s): 56
- 131 total
- 193 total



Residency

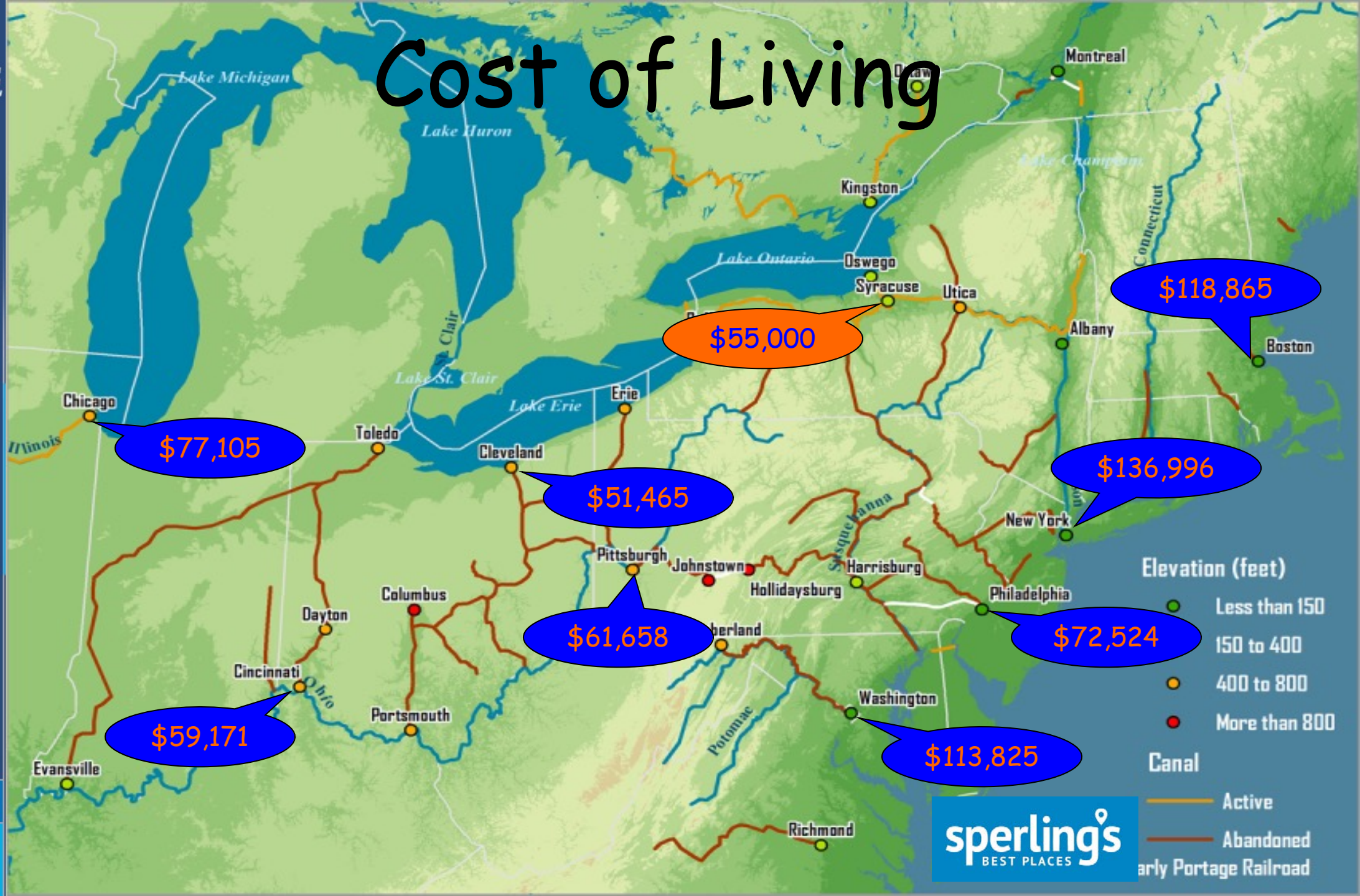


<http://www.upstate.edu/gme/residents/house-staff-salaries.php>

- Salaries (as of 7/1/2020)
 - PGY1s: \$55,177
 - PGY2s: \$59,329
 - PGY3s: \$62,086
 - Chiefs: \$64,630



Cost of Living



Residency



- **Benefits**

- Insurance (Medical, Dental, Vision / Individual or Family)
- Covered Parking On-Site
- \$1200 Annual Scholarship Fund (for presentations/publications)
- \$300 Annual Education Fund (for education-related resources)
- Daily Lunch and On-Call Meal Funding
- Buy and Launder White Coats
- Access to Campus Activities Building (CAB)

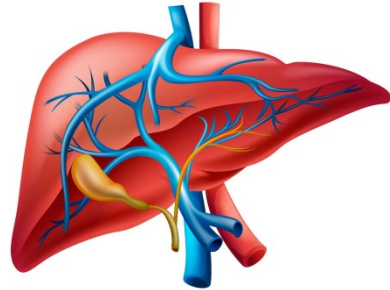
P
R
E
L
I
M
I
N
A
R
Y

Residency Training Format

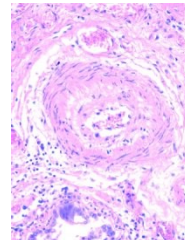
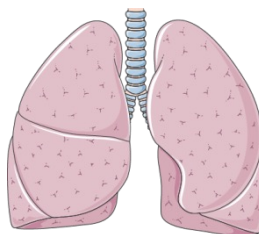
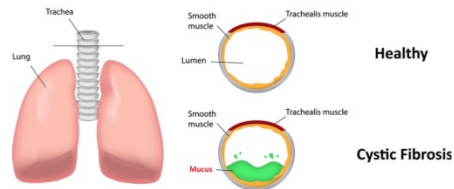


The Oldv. Inpatient and Outpatient

1P-Medicine	Elective	UH N MAI 2	Elective	Elective	VA Team 4B	VA Team 4B	VA NF	Elective	UH Team 6B	UH Team 6B	MICU 2	MICU 2
2P-Medicine	Elective C	Elective D	Elective F	UH N MAI 2	CICU 3	CICU 3	VA Team 2B	VA Team 2B	VA Team 4B	VA Team 4B	VA NF	Elective
3P-Medicine	UH Team 2B	UH Team 2B	VA Team 1A	VA Team 1A	Elective C	Elective D	Elective F	UH NF 2	CICU 3	CICU 3	VA Team 4A	VA Team 4A
4P-Medicine	VA Team 1B	VA Team 1B	UH Team 9B	UH Team 9B	VA Team 1B	VA Team 1B	UH Team 5B	UH Team 5B	Elective C	Elective D	Elective F	UH N MAI 2
5P-Medine	UH Team 8B	UH Team 8A	MICU 4	MICU 4	UH Team 2A	UH Team 2A	UH N MAI 2	Elective	Elective	VA NF	UH D MAI	Elective
6P-Medicine	UH Team 4B	UH Team 4B	VA NF	Elective	UH Team 3B	UH Team 3B	CICU 1	CICU 3	UH Team 2B	UH Team 2B	Elective	Elective
7P-Medicine	UH Team 5B	UH Team 5B	UH D MAI	Elective	UH Team 4B	UH Team 4B	UH NF 2	Elective	UH Team 3B	UH Team 3B	UH NF 2	Elective
8P-Medicine	VA Team 3B	VA Team 3B	UH Team 5A	UH Team 5A	UH Team 5B	UH Team 5B	Elective	UH D MAI	UH Team 4B	UH Team 4B	UH N MAI 2	Elective
9P-PM&R	UH Team 7B	UH Team 7B	UH N MAI 2	Elective	VA Team 3B	VA Team 3B	Elective	VA NF	UH Team 5B	UH Team 5B	Elective	UH D MAI
10P-PM&R	U										Elective	VA NF
11P-PM&R											Elective	Elective
12P-PM&R											MICU 3	MICU 3
13P-PM&R	V										UH Team 7B	UH Team 7B
14P-PM&R	U										VA Team 2B	VA Team 2B
15P-Radiology	V										Elective	UH NF 2
16P-Radiology											Elective C	Elective D
17P-Radiology	V										UH Team 7A	UH Team 7A
18P-Radiology	V										UH Team 8B	UH Team 8B
19P-Radiology											VA Team 1B	VA Team 1B
20P-Radiology											UH Team 1B	UH Team 1B
21P-Ophtho											CICU 1	CICU 1
22P-Ophtho											VA Team 4B	VA Team 4B
23P-Ophtho	V										UH Team 9B	UH Team 9B
1C-N	UH Team 5B	UH Team 5B	VA Team 5B	VA Team 5B	Gen Neuro	Gen Neuro	Stroke	Stroke	VA NF	UH D MAI	MICU 4	MICU 4
2C-N	Stroke	Stroke	Gen Neuro	Gen Neuro	Neuro ICU	Neuro ICU	Neuro ICU	Neuro ICU	Elective	Elective	UH Team 5B	UH Team 5B
3C-N	Gen Neuro	Gen Neuro	Neuro ICU	Neuro ICU	Neuro ICU	Neuro ICU	Elective	Elective	VA Team 1B	VA Team 1B	Neuro NF	Neuro NF
4C-N	UH Team 3B	UH Team 3B	Elective	Elective	Stroke	Stroke	UH Team 8B	UH Team 8B	MICU 4	MICU 4	UH Team 4B	UH Team 4B
5C-N	Gen Neuro	Gen Neuro	UH Team 7A	UH Team 7A	Gen Neuro	Gen Neuro	UH Team 9B	UH Team 9B	UH Team 5B	UH Team 5B	CICU 3	CICU 3
6C-N	Stroke	Stroke	VA Team 2B	VA Team 2B	MICU 4	MICU 4	UH Team 1B	UH Team 1B	Neuro ICU	Neuro ICU	Neuro ICU	Neuro ICU
7C-N	UH Team 5A	UH Team 5A	CICU 3	CICU 3	UH N MAI 2	Elective	VA Team 4B	VA Team 4B	Elective	UH NF 2	Elective	Elective
8C-N	CICU 1	CICU 1	UH NF 2	Elective	UH Team 2B	UH Team 2B	MICU 4	MICU 4	UH N MAI 2	Elective	Stroke	Stroke
9C-N	UH Team 1B	UH Team 1B	Gen Neuro	Gen Neuro	VA NF	UH D MAI	Neuro ICU	Neuro ICU	Neuro ICU	Neuro ICU	Elective	Elective
1C-A (Block #1)	ACS 2	ACS 2	UH Team 1B	UH Team 1B	Vacation	Vacation	ACS 2	ACS 2	CICU 1	CICU 1	UH Team 3B	UH Team 3B
2C-A (Block #1)	UH Team 8B	UH Team 8B	ACS 2	ACS 2	UH Team 3A	UH Team 3A	Vacation	Vacation	ACS 2	ACS 2	UH Team 2B	UH Team 2B
3C-A (Block #1)	MICU 3	MICU 3	UH Team 8B	UH Team 8B	CICU 1	CICU 1	UH Team 6B	UH Team 6B	Vacation	Vacation	ACS 2	ACS 2
4C-A (Block #1)	CICU 3	CICU 3	UH Team 6A	UH Team 6A	ACS 2	ACS 2	MICU 4	MICU 4	UH Team 6B	UH Team 6B	Vacation	Vacation



Cystic Fibrosis



Residency Rotations

Year	Inpatient	Critical Care (CCU/ICU)	Clinics (Continuity and Subspecialty)	ER	Night Service (Floors, CCU/ICU, Admission)	Medicine Consult Or RRT/Code	Day MAR/MAI	Elective Selective Quality Scholarship
1C	16	6	13	-	3	1	1	12
1P	24	6	-	-	5	-	2	15
2	9	5	13	-	7	3	4	12
3	9	4	12	2	3	3	1	18

Vacation is 4 weeks per academic year

Interns take in blocks; Residents take in days/weeks



Residency Shifts/Calls

Hospital	Floors	Critical Care	Night Float	Medicine Consult	MAR or MAI
UH	8AM-5PM Q4D Call until 8PM	7AM-7PM 7PM-8AM	8PM-8AM	7AM-5PM Home Call until 8PM	8AM-8PM 8PM-8AM
VA	8AM-5PM Q4D Call until 8PM	7AM-4PM	8PM-8AM	7AM-5PM Home Call until 8PM	8AM-8PM
Crouse	-	I: 7AM-9PM R: Q3D 24 call	9PM-9AM	-	-

No Call Required of Consult/Elective Services

Residency Scholarship



Last Academic Year

Abstracts: 167

Presentations: 120

Publications: 14

Scholarship Fund

\$1200 (annual) + **\$300** (for 1st author publications)



Residency Didactics

Journal Club

bi-weekly
driven by Specialty

Noon Didactic

Mon-Wed & Fri (w/lunch)
Specialty Driven by Month

Quality/M&M

Some Thursdays (w/lunch)

UH Noon Report

M-F (w/lunch)
cases & MKSAP

VA Noon Report

M-F (w/lunch)
cases & simulation

Emergency Series

July & August

Intern Report

bi-weekly cases

CC Conference

Mon-Wed & Fri (w/lunch)
Outpatient-Based
Driven by Specialty

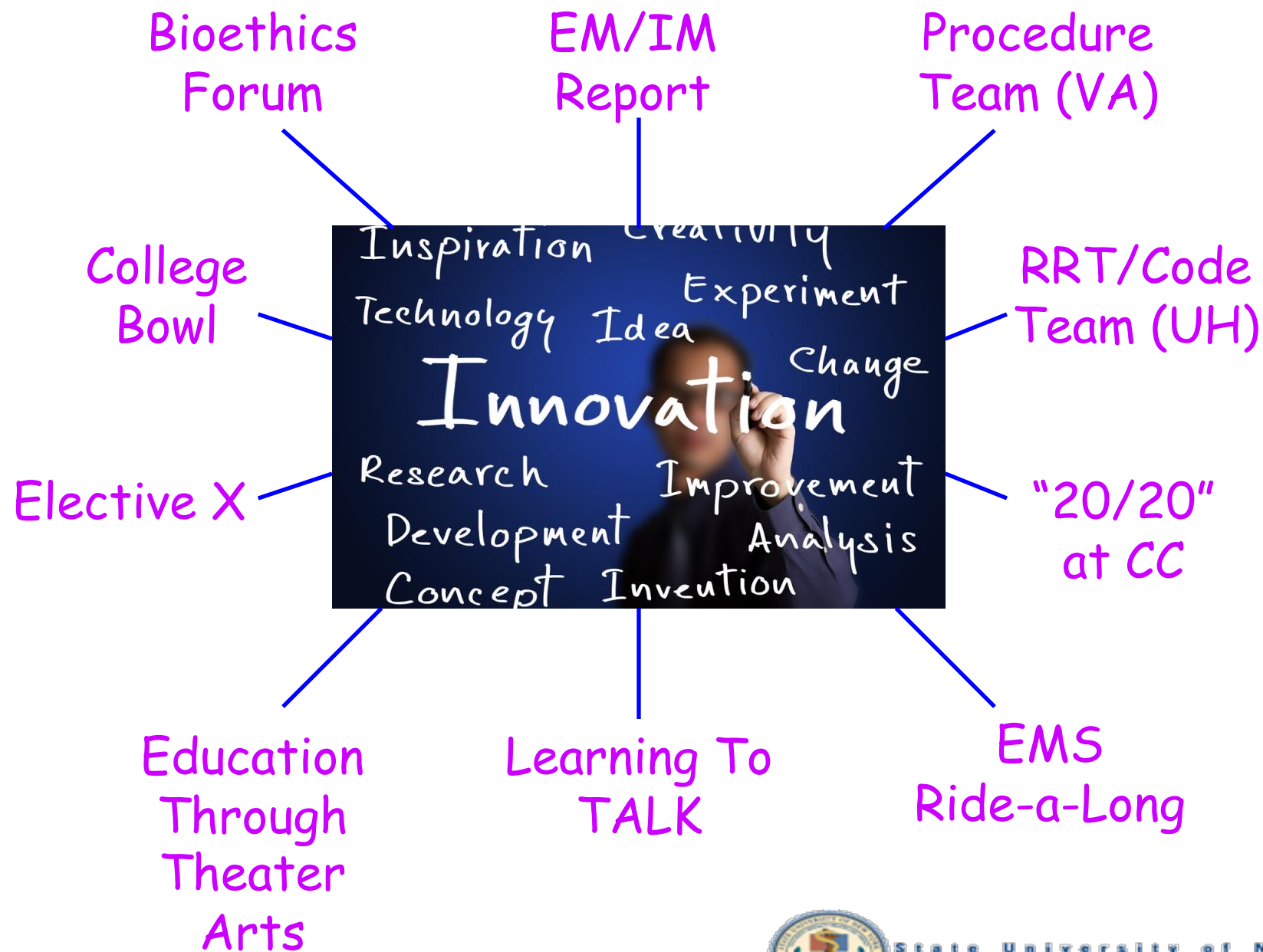
Controversies in Medicine

Some Thursdays (w/lunch)

Senior Capstones

1st & 3rd Thursdays (w/lunch)





Social Committee



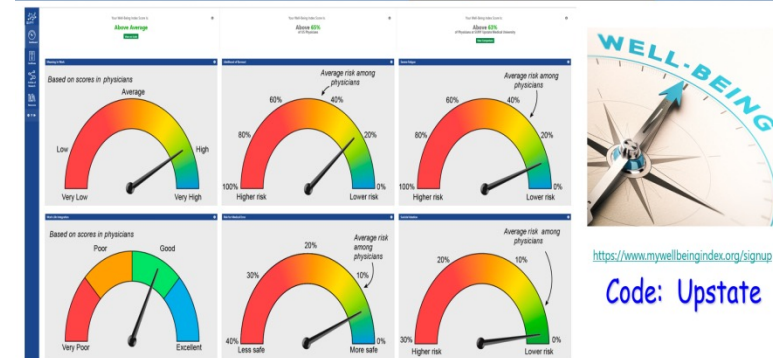
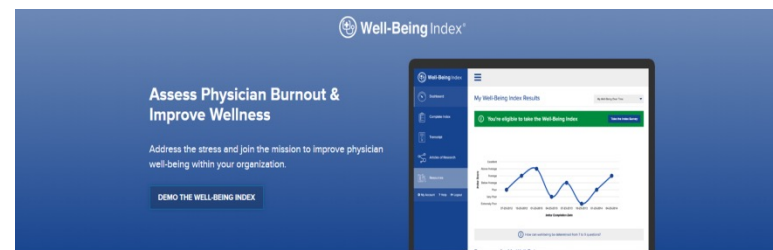
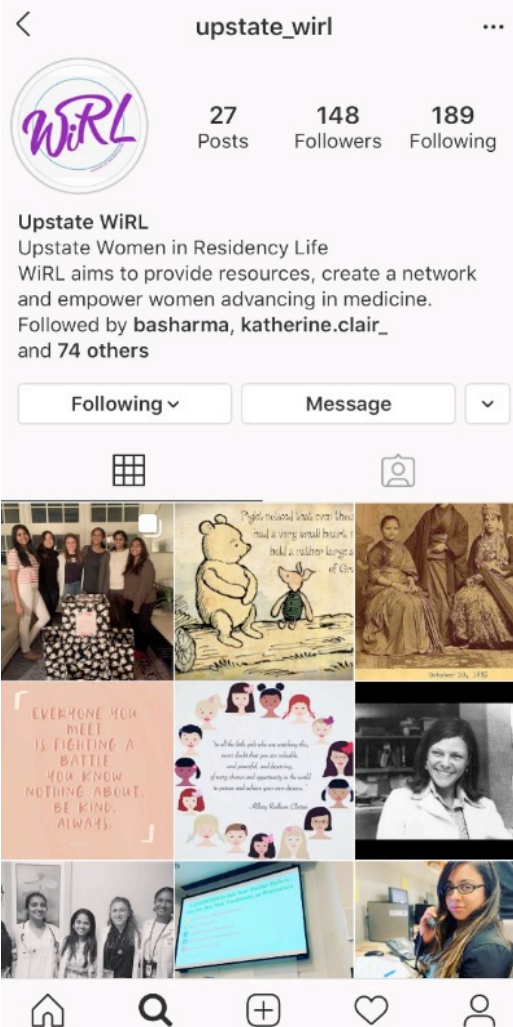
Intern Week



Recog Dinner



Wellness



MICU J and Wellness Rotation - Curriculum

Educational Purpose

Seemingly contradictory, we have created this 1-week rotation to mitigate fatigue and stress on the professional front while endeavoring to promote wellness on a personal level. MICU J will offer an additional house officer to support our critical care patients on our most vulnerable days (such as during didactic requirements or on weekends) while Wellness will protect the same house officer at all other times of the week to focus on personal needs.



After Residency

Main symptoms of
Diabetes



Prospective

Message from the Program Director

Message from the Chair

Program Overview

Schedules

Meet the Staff

Fellowship Programs

Fellowship and Beyond

Meet the Residents

Resident Social Life

Your Interview

Hotel and Travel Information

Frequently Asked Questions

How to Apply

About Syracuse & Central NY

Please Visit!



Prospective Housestaff

Upstate's innovative Internal Medicine program allows residents to prepare for careers in primary health care, subspecialty training, academic medicine, and community health.

We're a fully accredited residency program with a substantial referral area. Patients range from inner-city underserved populations to the suburban middle/upper class. Our residents care for these patients under the direction of a dedicated, accessible, and personable faculty.

DIRECTOR'S MESSAGE



Stephen J. Knohl, MD
Program Director

Welcome to SUNY Upstate Medical University's Internal Medicine Residency Training Program. By way of introduction, I would like to share with you a story... [Read more >](#)



55
Posts

300
Followers

162
Following

Upstate IM Resident

Welcome to the official SUNY Upstate internal medicine residency IG, content delivered by your favorite chief residents! #UpstateIM #UpstateIMResident
Followed by sarwat.askari, kaur.gurmeen and 114 others

Following ▾

Message





Welcome To Upstate!!!